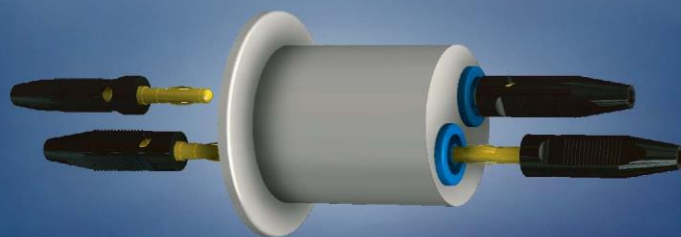
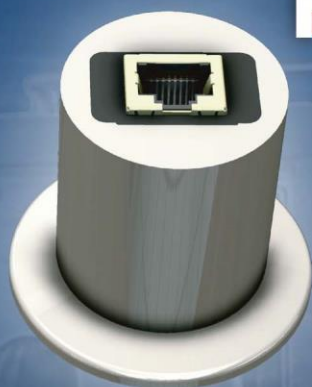




GiBies



**Plug In expertise
for GloveBox
Feedthroughs**

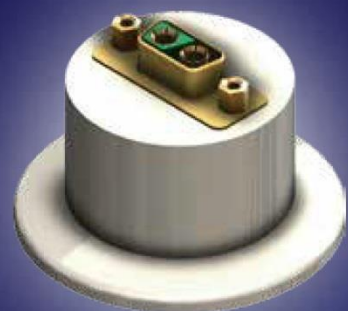


**www.plugin-vacuum.com
France**

High performance



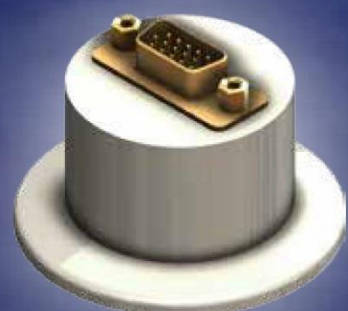
Full polyester feedthrough body



GB-KF40P2W2P-M/F
ISO KF DN40 flange equipped with keyed D-SUB connector. And 2 x high power 40 Amp contacts. Also available as F/F or F/M



GB-KF40P09ND-M/F
ISO KF DN40 flange equipped with 9 contacts D-SUB connector. Also available as F/F or F/M.



GB-KF40P15HD-M/F
ISO KF DN40 flange equipped with a high density 15 contacts D-SUB connector. Also available as F/F or F/M.



GB-KF40P-2USB-F/F
ISO KF DN40 flange equipped with 2 USB 3.0 connectors.



GB-KF40P-1RJ45-F/F
ISO KF DN40 flange equipped with 1 RJ45 connector.



GB-KF40PM12-M/F
ISO KF DN40 flange equipped with 1 M12 connector for solenoid valve control.



GB-KF40P1BNC-F/F
ISO KF DN40 flange equipped with 1 BNC connector.



GB-KF40PMD6-F/F
ISO KF DN40 flange equipped with 1 Mini Din 6 contacts connector.



GB-KF40P1SMA-F/F
ISO KF DN40 flange equipped with 1 SMA connector.



GB-KF40P2FB-F/F
ISO KF DN40 flange equipped with 2 Safety Banana Jacks



GB-KF40P1TF6
ISO KF DN40 flange equipped with 1 M6 Threaded rod. Up to 60 Amp.



High grade epoxy resin - Temperature range : -40°C / +80°C

*E*stablished in 1999, Plug In is considered today as a reference for developing and manufacturing original and reliable feedthrough solutions. Since its foundation, our R&D is using the most efficient 3D CAD software. With several patents, a proved production quality and a high service oriented support, Plug In is widely recognized for its capability to solve nearly all customers needs.

*Y*our great design needs our GB

*I*magine that your glove box becomes quickly interfaceable with your acquisition systems regardless of the type of connector that equips these systems. That's what Plug In offers you with a new wide range of high-performance environmental tight feedthroughs based on a polyester body according to the ISO KF40 standard, an epoxy sealing and loaded with the connector of your choice.

From the simplest to the most complex, all standard connector types are available in a huge variety of configurations.

Plug In Sarl
5, rue du corps franc du Sidobre
F-81210 ROQUECOURBE
Phone : +33 (0)563 82 50 60
E-mail : quality@plugin.fr

Please visit our web site for our sales network
www.plugin-vacuum.com

