



Eurovacuum EVT Series

High Performance Turbo molecular pumps



Eurovacuum

Eurovacuum EVT Series High Performance Turbo molecular pumps

Eurovacuum Company is offering its various products to meet industrial vacuum needs.

Eurovacuum Company is founded in 2006, with over 30 year experiences in the vacuum Industry its founders have been putting their best efforts continuously to deliver high quality Turbo molecular Pumps, with diverse range of capacity.

Eurovacuum has chosen to deliver Turbo molecular pumps manufactured by **KYKY Technology Development Ltd.** from Beijing in China, because these pumps are build at world-class quality. To proof there quality these pumps are supplied with a 18 month warranty, the best warranty in the business. These pumps are the ideal solution for applications requiring rugged reliable and proven hardware.

Advantages to the User

- 18 month warranty
- Very good price/quality level
- Instant exchange program available within Europe
- High pumping speed
- Low noise level
- Pumps are supplied with CE certificate
- Wide range of accessories available for easy adaptation

Application Examples

- Furnaces and plants
- Laser technology
- Medicinal technology
- Metallurgy
- Space simulation
- Vacuum coating
- Semi-conductor
- Data storage

KYKY 北京中科科仪技术发展有限责任公司
KYKY TECHNOLOGY DEVELOPMENT LTD.



Eurovacuum

Head office
Einsteinstraat 58
2811 EP Reeuwijk
The Netherlands

Tel. +31-(0)182399728
Fax. +31-(0)182399729
info@eurovacuum.eu
<http://www.eurovacuum.eu>

ING Bank: 67.50.92.655
IBAN: NL06 INGB 0675 0926 55
BIC: INGBNL2A

Contents

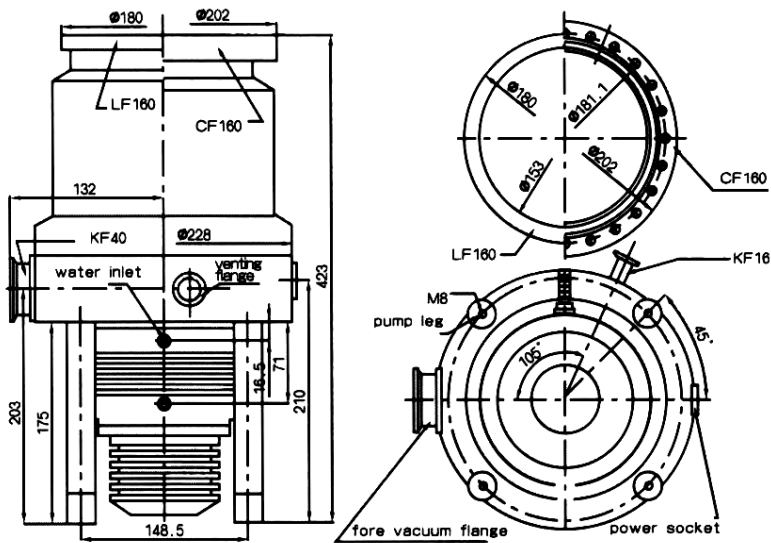
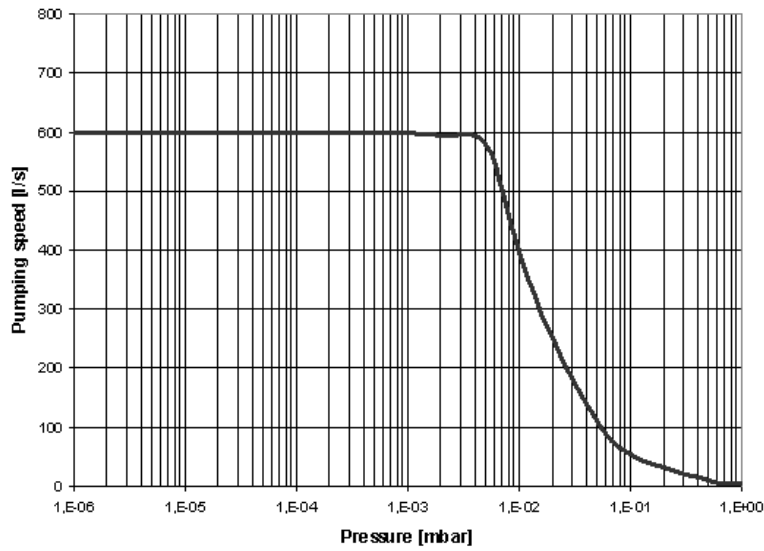


Eurovacuum EVT Series

- EVT-620E 4
- EVT-620ZE 6
- EVT-700E 8
- EVT-1200CE 10
- EVT-1300E 12
- EVT-1600E 14
- EVT-1800E 16
- EVT-3500E 18
- EVT-620NE 20
(Chemical applications)
- EVT-1200NE 22
(Chemical applications)
- EVT-Controls 24

Accessories for Turbo Pump 25

TYPE EVT-620E

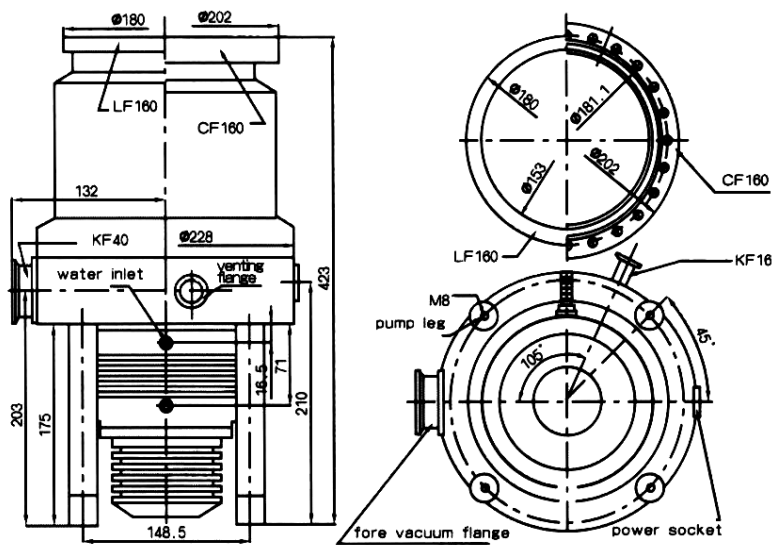
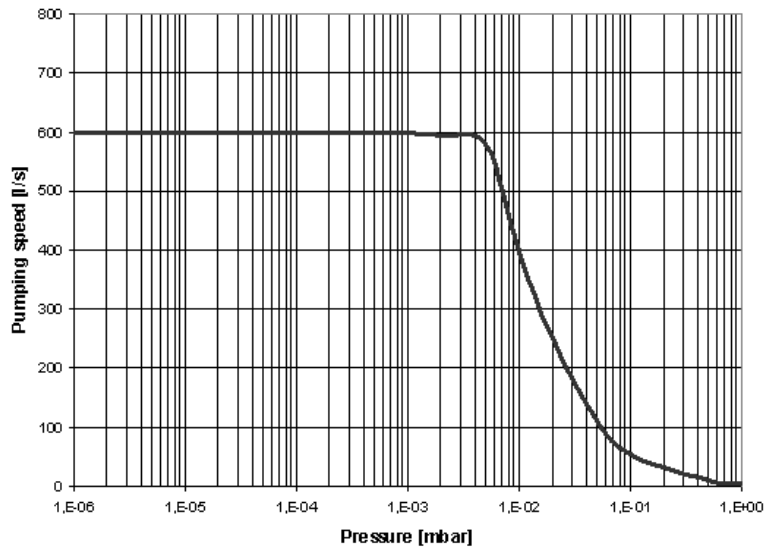


TYPE EVT-620E

Technical Data		TYPE EVT-620E	
		620E-LF	620E-CF
Pump type		Compound/Drag	Compound/Drag
Inlet Flange		160 ISO-K	160 CF
Fore vacuum Flange		40 KF	40 KF
Pumping speed (air)	l/s	600	600
Pressure for max. speed	mbar	1×10^{-2}	1×10^{-2}
Rotation Speed	rpm	36.000	36.000
H ₂ Compression Ratio		6×10^4	6×10^4
N ₂ Compression Ratio		1×10^9	1×10^9
Ultimate Vacuum	mbar	6×10^{-9}	6×10^{-10}
Run up Time	min	<6	<6
Control Unit		FD-II 600H	FD-II 600H
Input Voltage	VAC	220/110 ±10%	220/110 ±10%
Cooling water	l/min	> 2	> 2
Bearing type		Ceramic Oil	Ceramic Oil
Operating Orientation		Vertical (± 5°)	Vertical (± 5°)
Weight	kg	29	29

Ordering Information	TYPE EVT-620E	
	620E-LF	620E-CF
Turbo drag pump EVT-620E incl. splinter screen	806.000	806.001
Control unit type FD-II 600H	806.010	806.010
Cable 2,5 m	806.011	806.011
Cable 5 m	806.012	806.012
Cable 10 m	806.013	806.013
Cable 20 m	806.014	806.014
Other lengths	Upon request	Upon request
Heating jacket 230V AC	806.020	806.020
Venting valve NC 230V AC, 50/60Hz	250.533	
Venting valve NC 24V AC, 50/60Hz	250.531	
Venting valve NC 24V, DC	250.530	
Filter for venting valves	215.152	
Venting valve NO 200-230V, 50/60Hz	250.851	
Venting valve NO 24V, DC	250.850	
Delayed venting unit	Upon request	
Aircooling unit R-XT, 90 - 264V AC, 50/60Hz	800.010	
12V, DC	800.011	
Recommended fore pump: Standard operation Type EVD-TRP-36, 400V AC	423.902	
Purge gas operation Type EVD-TRP-48, 400V AC	424.902	
Also Dry pumps can be used		

TYPE EVT-620ZE

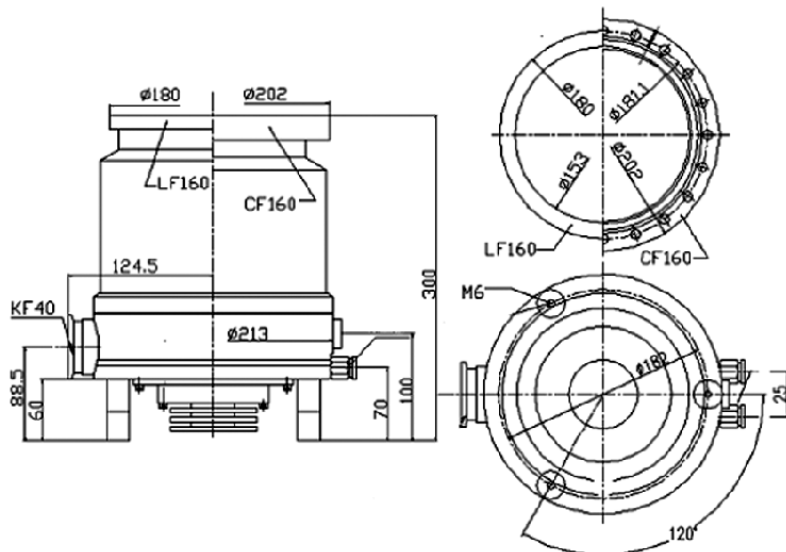
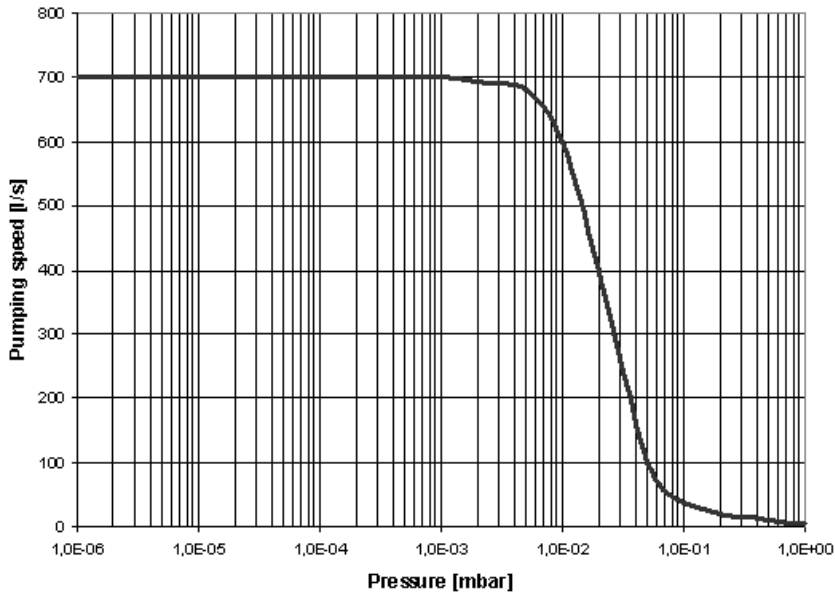


TYPE EVT-620ZE

Technical Data		TYPE EVT-620ZE	
		620ZE-LF	620ZE-CF
Pump type		Compound/Drag	Compound/Drag
Inlet Flange		160 ISO-K	160 CF
Fore vacuum Flange		40 KF	40 KF
Pumping speed (air)	l/s	600	600
Pressure for max. speed	mbar	1×10^{-2}	1×10^{-2}
Rotation Speed	rpm	27.000	27.000
H ₂ Compression Ratio		6×10^3	6×10^3
N ₂ Compression Ratio		1×10^9	1×10^9
Ultimate Vacuum	mbar	6×10^{-8}	6×10^{-9}
Run up Time	min	<5	<5
Control Unit		FD-II 600K	FD-II 600K
Input Voltage	VAC	220/110 ±10%	220/110 ±10%
Cooling water	l/min	> 2	> 2
Bearing type		Ceramic Grease	Ceramic Grease
Operating Orientation		Any	Any
Weight	kg	29	29

Ordering Information	TYPE EVT-620ZE	
	620ZE-LF	620ZE-CF
Turbo drag pump EVT-620ZE incl. splinter screen	806.100	806.101
Control unit type FD-II 600K	806.110	806.110
Cable 2,5 m	806.011	806.011
Cable 5 m	806.012	806.012
Cable 10 m	806.013	806.013
Cable 20 m	806.014	806.014
Other lengths	Upon request	Upon request
Heating jacket 230V AC	806.020	806.020
Venting valve NC 230V AC, 50/60Hz	250.533	
Venting valve NC 24V AC, 50/60Hz	250.531	
Venting valve NC 24V, DC	250.530	
Filter for venting valves	215.152	
Venting valve NO 200-230V, 50/60Hz	250.851	
Venting valve NO 24V, DC	250.850	
Delayed venting unit	Upon request	
Aircooling unit R-XT, 90 - 264V AC, 50/60Hz	800.010	
12V, DC	800.011	
Recommended fore pump: Standard operation Type EVD-TRP-36, 400V AC	423.902	
Purge gas operation Type EVD-TRP-48, 400V AC	424.902	
Also Dry pumps can be used		

TYPE EVT-700E

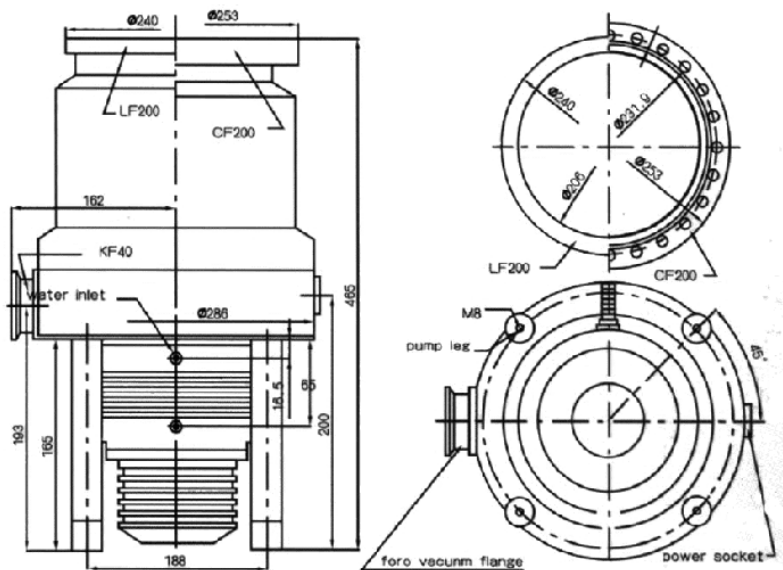
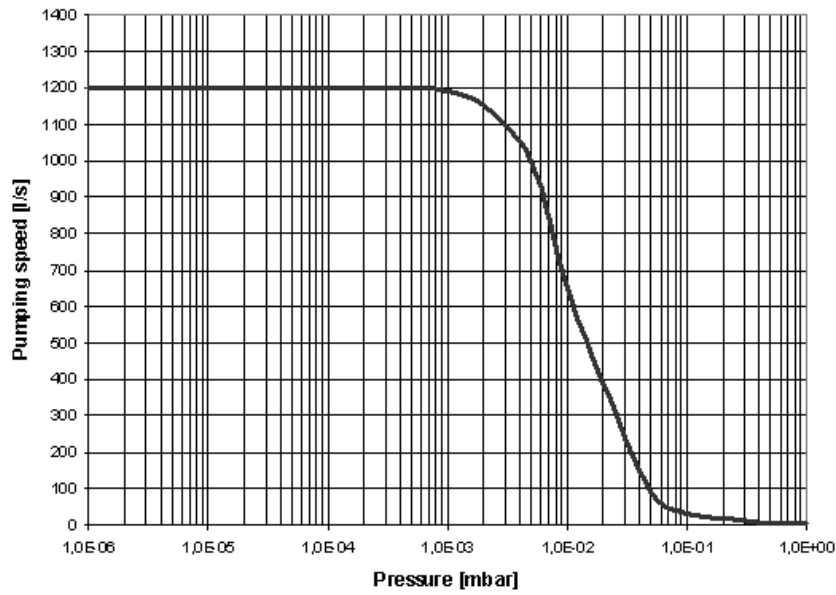


TYPE EVT-700E

Technical Data		TYPE EVT-700E	
		700E-LF	700E-CF
Pump type		Compound/Drag	Compound/Drag
Inlet Flange		160 ISO-K	160 CF
Fore vacuum Flange		40 KF	40 KF
Pumping speed (air)	l/s	700	700
Pressure for max. speed	mbar	1×10^{-2}	1×10^{-2}
Rotation Speed	rpm	36.000	36.000
H ₂ Compression Ratio		6×10^6	6×10^6
N ₂ Compression Ratio		1×10^9	1×10^9
Ultimate Vacuum	mbar	6×10^{-9}	6×10^{-10}
Run up Time	min	<4	<4
Control Unit		FD-II 700K	FD-II 700K
Input Voltage	VAC	220/110 ±10%	220/110 ±10%
Cooling water	l/min	> 2	> 2
Bearing type		Ceramic Grease	Ceramic Grease
Operating Orientation		Any	Any
Weight	kg	19	19

Ordering Information	TYPE EVT-700E	
	700E-LF	700E-CF
Turbo drag pump EVT-700E incl. splinter screen	807.000	807.001
Control unit type FD-II 700K	807.010	807.010
Cable 2,5 m	807.011	807.011
Cable 5 m	807.012	807.012
Cable 10 m	807.013	807.013
Cable 20 m	807.014	807.014
Other lengths	Upon request	Upon request
Heating jacket 230V AC	807.020	807.020
Venting valve NC 230V AC, 50/60Hz	250.533	
Venting valve NC 24V AC, 50/60Hz	250.531	
Venting valve NC 24V, DC	250.530	
Filter for venting valves	215.152	
Venting valve NO 200-230V, 50/60Hz	250.851	
Venting valve NO 24V, DC	250.850	
Delayed venting unit	Upon request	
Aircooling unit R-XT, 90 - 264V AC, 50/60Hz	800.010	
12V, DC	800.011	
Recommended fore pump: Standard operation Type EVD-TRP-36, 400V AC	423.902	
Purge gas operation Type EVD-TRP-48, 400V AC	424.902	
Also Dry pumps can be used		

TYPE EVT-1200CE

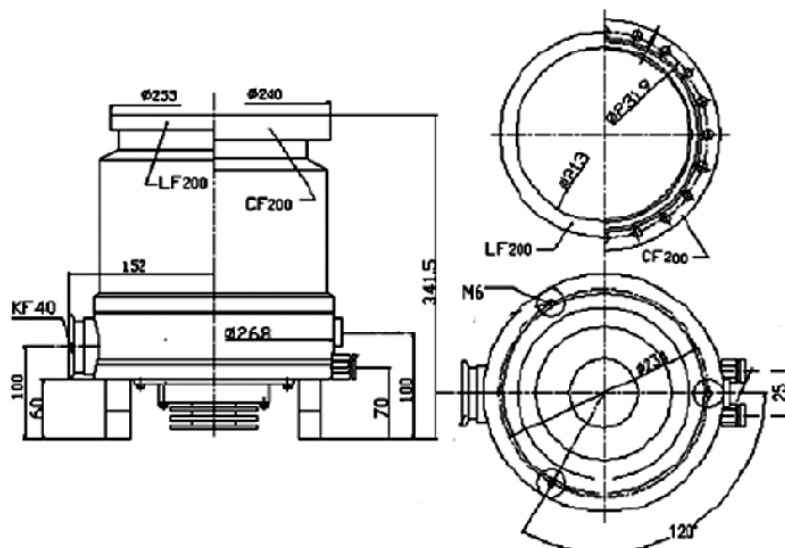
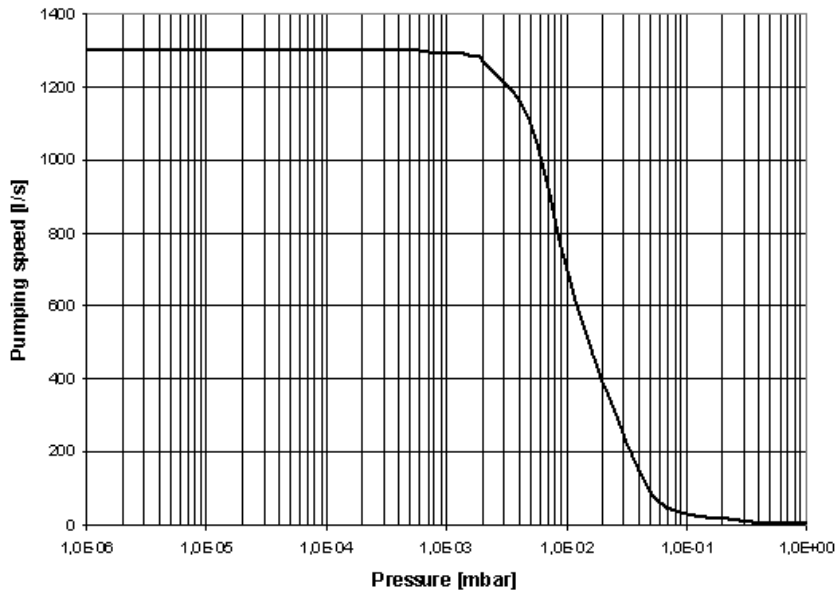


TYPE EVT-1200CE

Technical Data		TYPE EVT-1200CE	
		1200CE-LF	1200CE-CF
Pump type		Compound/Drag	Compound/Drag
Inlet Flange		200 ISO-K	200 CF
Fore vacuum Flange		40 KF	40 KF
Pumping speed (air)	l/s	1.200	1.200
Pressure for max. speed	mbar	1×10^{-2}	1×10^{-2}
Rotation Speed	rpm	24.000	24.000
H ₂ Compression Ratio		6×10^3	6×10^3
N ₂ Compression Ratio		1×10^9	1×10^9
Ultimate Vacuum	mbar	6×10^{-8}	6×10^{-9}
Run up Time	min	<6	<6
Control Unit		FD-II 1200H	FD-II 1200H
Input Voltage	VAC	220 ±10%	220 ±10%
Cooling water	l/min	> 2	> 2
Bearing type		Ceramic Grease	Ceramic Grease
Operating Orientation		Any	Any
Weight	kg	39	39

Ordering Information	TYPE EVT-1200CE	
	1200CE-LF	1200CE-CF
Turbo drag pump EVT-1200CE incl. splinter screen	812.100	812.101
Control unit type FD-II 1200H	812.110	812.110
Cable 2,5 m	812.011	812.011
Cable 5 m	812.012	812.012
Cable 10 m	812.013	812.013
Cable 20 m	812.014	812.014
Other lengths	Upon request	Upon request
Heating jacket 230V AC	Upon request	Upon request
Venting valve NC 230V AC, 50/60Hz	250.533	
Venting valve NC 24V AC, 50/60Hz	250.531	
Venting valve NC 24V, DC	250.530	
Filter for venting valves	215.152	
Venting valve NO 200-230V, 50/60Hz	250.851	
Venting valve NO 24V, DC	250.850	
Delayed venting unit	Upon request	
Aircooling unit R-XT, 90 - 264V AC, 50/60Hz	800.010	
12V, DC	800.011	
Recommended fore pump: Standard operation Type EVD-TRP-48, 400V AC	424.902	
Purge gas operation Type EVD-TRP-60, 400V AC Also Dry pumps can be used	425.902	

TYPE EVT-1300E

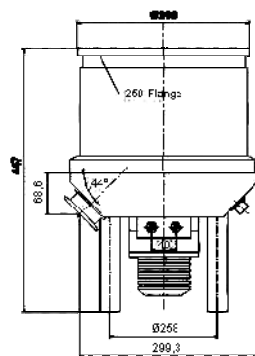
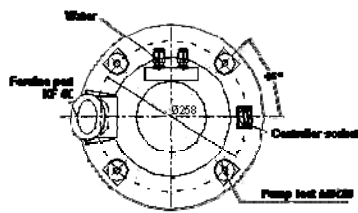
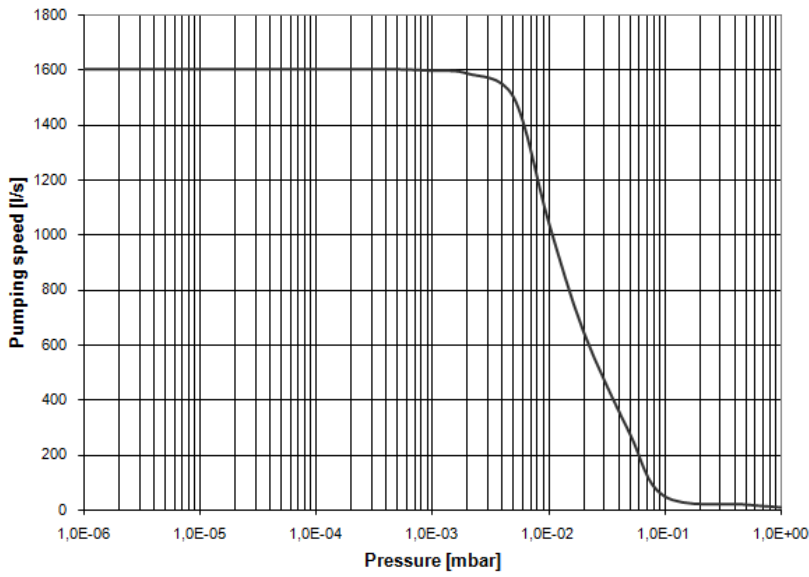


TYPE EVT-1300E

Technical Data		TYPE EVT-1300E	
		1300E-LF	1300E-CF
Pump type		Compound/Drag	Compound/Drag
Inlet Flange		200 ISO-K	200 CF
Fore vacuum Flange		40 KF	40 KF
Pumping speed (air)	l/s	1.300	1.300
Pressure for max. speed	mbar	1×10^{-2}	1×10^{-2}
Rotation Speed	rpm	24.000	24.000
H ₂ Compression Ratio		1×10^3	1×10^3
N ₂ Compression Ratio		1×10^9	1×10^9
Ultimate Vacuum	mbar	6×10^{-8}	6×10^{-9}
Run up Time	min	<6	<6
Control Unit		FD-II 1300K	FD-II 1300K
Input Voltage	VAC	220 ±10%	220 ±10%
Cooling water	l/min	> 2	> 2
Bearing type		Ceramic Grease	Ceramic Grease
Operating Orientation		Any	Any
Weight	kg	29	29

Ordering Information	TYPE EVT-1300E	
	1300E-LF	1300E-CF
Turbo drag pump EVT-1300E incl. splinter screen	813.000	813.001
Control unit type FD-II 1300K	813.010	813.010
Cable 2,5 m	813.011	813.011
Cable 5 m	813.012	813.012
Cable 10 m	813.013	813.013
Cable 20 m	813.014	813.014
Other lengths	Upon request	Upon request
Heating jacket 230V AC	Upon request	Upon request
Venting valve NC 230V AC, 50/60Hz	250.533	
Venting valve NC 24V AC, 50/60Hz	250.531	
Venting valve NC 24V, DC	250.530	
Filter for venting valves	215.152	
Venting valve NO 200-230V, 50/60Hz	250.851	
Venting valve NO 24V, DC	250.850	
Delayed venting unit	Upon request	
Aircooling unit R-XT, 90 - 264V AC, 50/60Hz	800.010	
12V, DC	800.011	
Recommended fore pump: Standard operation Type EVD-TRP-48, 400V AC	424.902	
Purge gas operation Type EVD-TRP-60, 400V AC	425.902	
Also Dry pumps can be used		

TYPE EVT-1600E

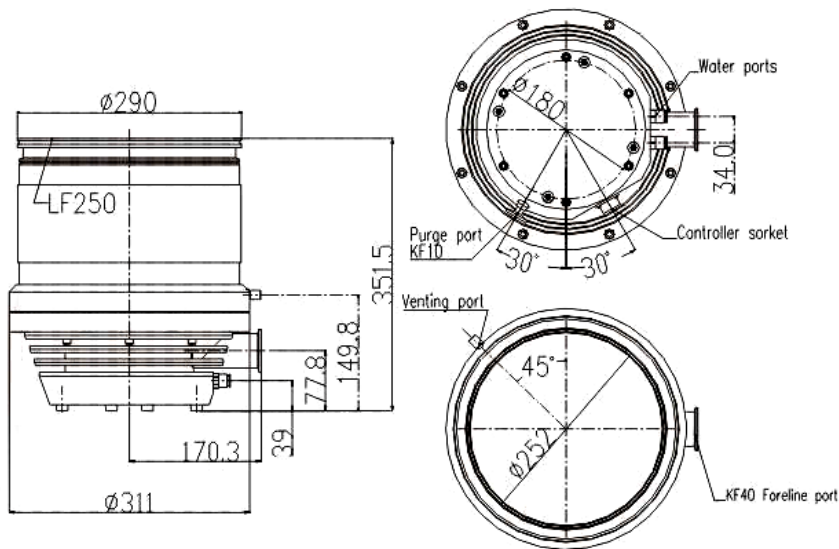
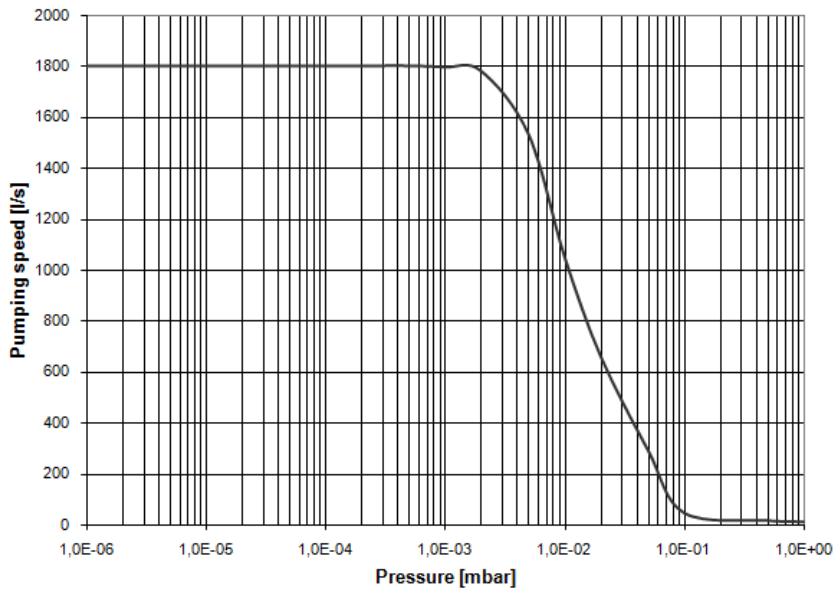


TYPE EVT-1600E

Technical Data		TYPE EVT-1600E
		1600E-LF
Pump type		Compound/Drag
Inlet Flange		250 ISO-K
Fore vacuum Flange		50 KF
Pumping speed (air)	l/s	1.600
Pressure for max. speed	mbar	1×10^{-2}
Rotation Speed	rpm	27.000
H ₂ Compression Ratio		5×10^3
N ₂ Compression Ratio		1×10^8
Ultimate Vacuum	mbar	9×10^{-9}
Run up Time	min	<7
Control Unit		FD-II 1600K
Input Voltage	VAC	220 ±10%
Cooling water	l/min	> 2
Bearing type		Ceramic Oil
Operating Orientation		Vertical (± 5°)
Weight	kg	47

Ordering Information	TYPE EVT-1600E
	1600E-LF
Turbo drag pump EVT-1600E incl. splinter screen	816.000
Control unit type FD-II 1600K	816.010
Cable 2,5 m	816.011
Cable 5 m	816.012
Cable 10 m	816.013
Cable 20 m	816.014
Other lengths	Upon request
Heating jacket 230V AC	Upon request
Venting valve NC 230V AC, 50/60Hz	250.533
Venting valve NC 24V AC, 50/60Hz	250.531
Venting valve NC 24V, DC	250.530
Filter for venting valves	215.152
Venting valve NO 200-230V, 50/60Hz	250.851
Venting valve NO 24V, DC	250.850
Delayed venting unit	Upon request
Aircooling unit R-XT, 90 - 264V AC, 50/60Hz	800.010
12V, DC	800.011
Recommended fore pump: Standard operation Type EVD-TRP-60, 400V AC	425.902
Purge gas operation Type EVD-TRP-90, 400V AC	426.902
Also Dry pumps can be used	

TYPE EVT-1800E

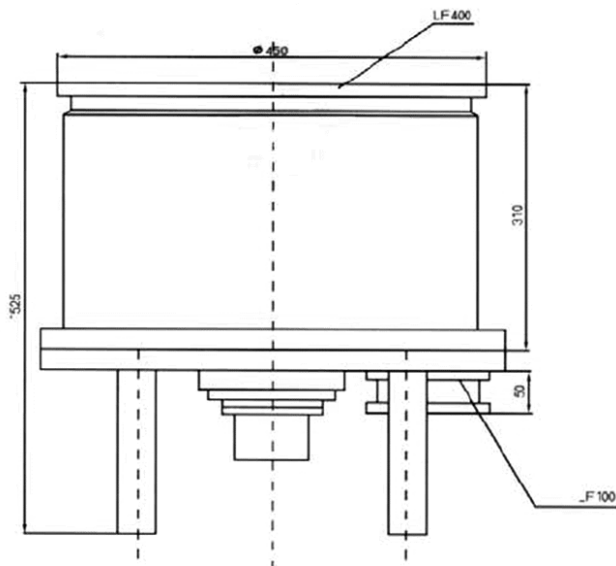
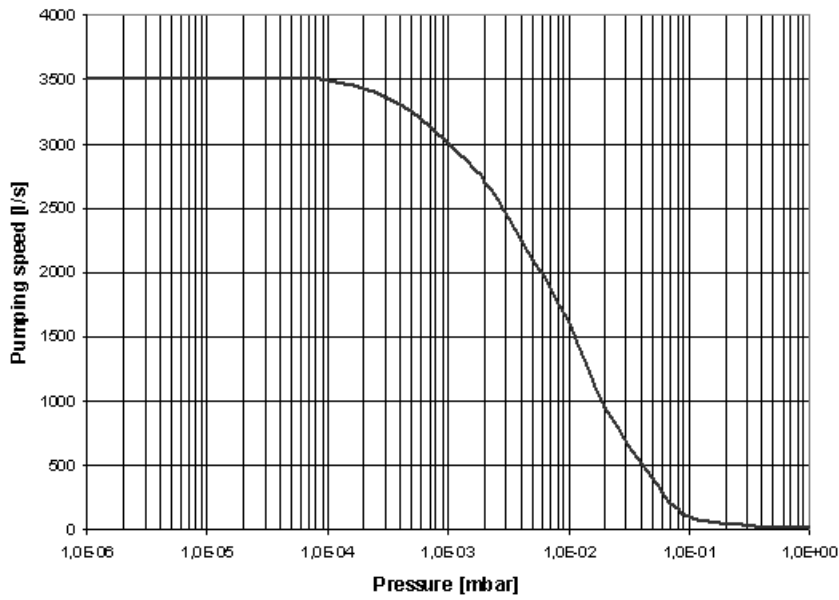


TYPE EVT-1800E

Technical Data		TYPE EVT-1800E
		1800E-LF
Pump type		Compound/Drag
Inlet Flange		250 ISO-K
Fore vacuum Flange		40 KF
Pumping speed (air)	l/s	1.800
Rotation Speed	rpm	27.000
H ₂ Compression Ratio		6x10 ³
N ₂ Compression Ratio		1x10 ⁸
Ultimate Vacuum	mbar	6x10 ⁻⁹
Run up Time	min	<7,5
Control Unit		FD-II 1800K
Input Voltage	VAC	220 ±10%
Cooling water	°C	<25
Bearing type		Ceramic Grease
Operating Orientation		Any
Weight	kg	40
Purge flange		10 KF
Venting port	mm	Ø 1

Ordering Information	TYPE EVT-1800E
	1800E-LF
Turbo drag pump EVT-1800E incl. splinter screen & venting port	818.000
Control unit type FD-II 1800K	818.010
Cable 2,5 m	818.011
Cable 5 m	818.012
Cable 10 m	818.013
Cable 20 m	818.014
Other lengths	Upon request
Heating jacket 230V AC	Upon request
Aircooling unit R-XT, 90 - 264V AC, 50/60Hz	800.010
12V, DC	800.011
Recommended fore pump: Standard operation Type EVD-TRP-60, 400V AC	425.902
Purge gas operation Type EVD-TRP-90, 400V AC Also Dry pumps can be used	426.902

TYPE EVT-3500E



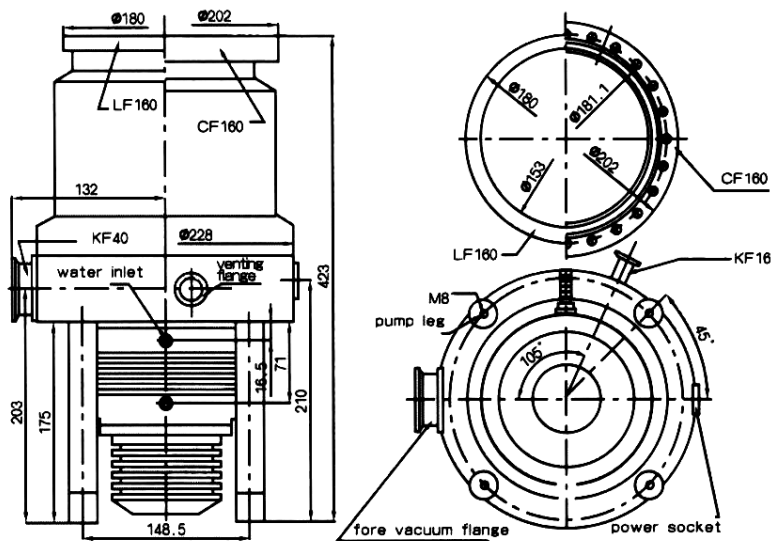
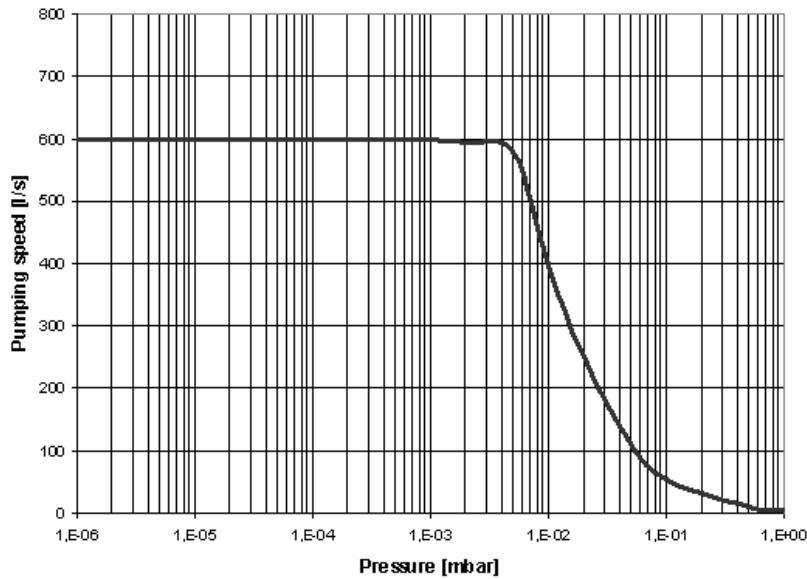
TYPE EVT-3500E

Technical Data		TYPE EVT-3500E
		3500E-LF
Pump type		Classic Turbo
Inlet Flange		400 ISO-K
Fore vacuum Flange		100 ISO-K
Pumping speed (air)	l/s	3.500
Pressure for max. speed	mbar	1×10^{-2}
Rotation Speed	rpm	13.500
H ₂ Compression Ratio		5×10^2
N ₂ Compression Ratio		$> 1 \times 10^8$
Ultimate Vacuum	mbar	6×10^{-8}
Run up Time	min	<20
Control Unit		FD-III
Input Voltage	VAC	220 ±10%
Cooling water	l/min	> 2
Bearing type		Ceramic Oil
Operating Orientation		Vertical (± 5°)
Weight	kg	120

Ordering Information	TYPE EVT-3500E
	3500E-LF
Turbo drag pump EVT-3500E incl. splinter screen	835.000
Control unit type FD-III	835.010
Cable 2,5 m	835.011
Cable 5 m	835.012
Cable 10 m	835.013
Cable 20 m	835.014
Other lengths	Upon request
Heating jacket 230V AC	Upon request
Venting valve NC 230V AC, 50/60Hz	250.533
Venting valve NC 24V AC, 50/60Hz	250.531
Venting valve NC 24V, DC	250.530
Filter for venting valves	215.152
Venting valve NO 200-230V, 50/60Hz	250.851
Venting valve NO 24V, DC	250.850
Delayed venting unit	Upon request
Aircooling unit R-XT, 90 - 264V AC, 50/60Hz	800.010
12V, DC	800.011
Recommended fore pump: Standard operation Type EVD-TRP-90, 400V AC	426.902
Purge gas operation Fore pump + Roots Also Dry pumps can be used	Upon request

TYPE EVT-620NE

For chemical applications



TYPE EVT-620NE

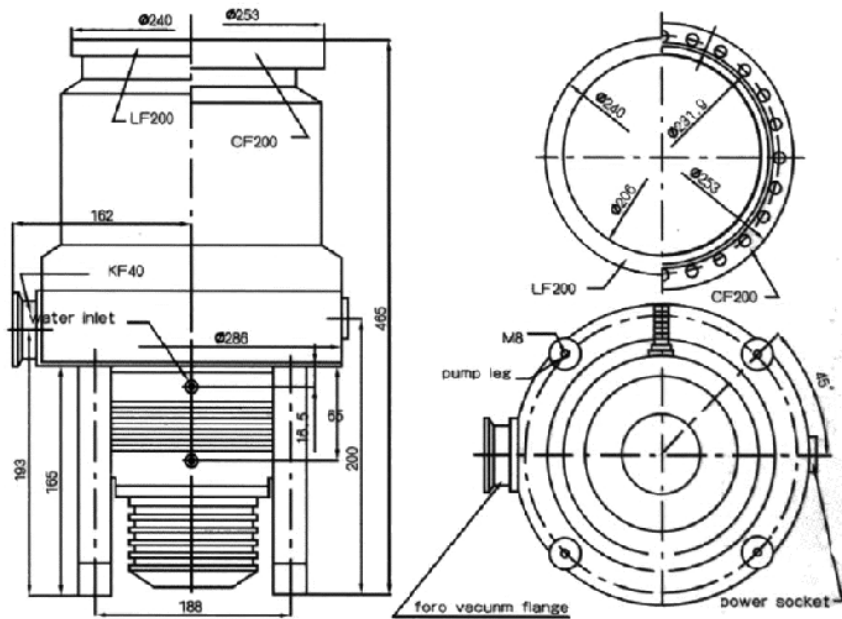
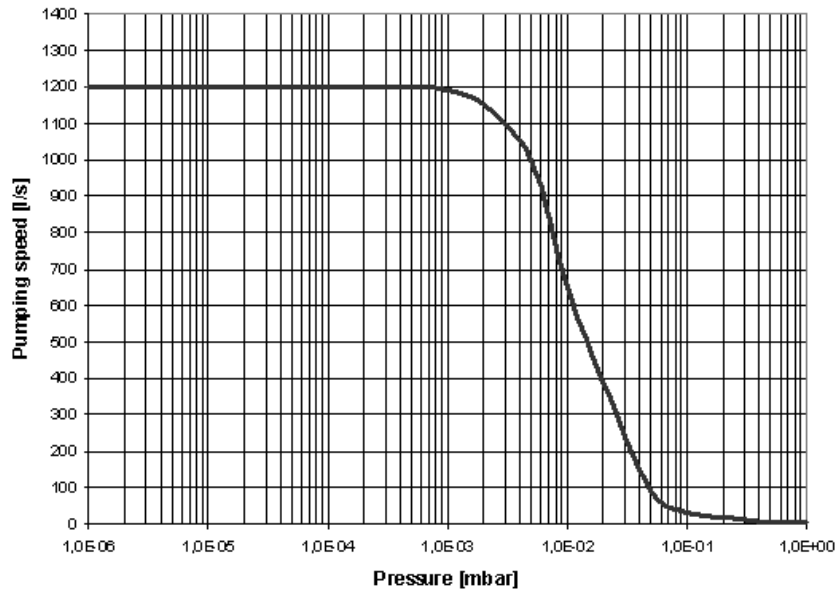
For chemical applications

Technical Data		TYPE EVT-620NE	
		620NE-LF	620NE-CF
Pump type		Compound/Drag	Compound/Drag
Inlet Flange		160 ISO-K	160 CF
Fore vacuum Flange		40 KF	40 KF
Pumping speed (air)	l/s	600	600
Pressure for max. speed	mbar	1×10^{-2}	1×10^{-2}
Rotation Speed	rpm	27.000	27.000
H ₂ Compression Ratio		6×10^3	6×10^3
N ₂ Compression Ratio		1×10^9	1×10^9
Ultimate Vacuum	mbar	6×10^{-8}	6×10^{-9}
Run up Time	min	<5	<5
Control Unit		FD-II 600K	FD-II 600K
Input Voltage	VAC	220/110 ±10%	220/110 ±10%
Purge port		16 KF	16 KF
Cooling water	l/min	> 2	> 2
Bearing type		Ceramic Oil	Ceramic Oil
Operating Orientation		Vertical (± 5°)	Vertical (± 5°)
Weight	kg	29	29

Ordering Information	TYPE EVT-620NE	
	620NE-LF	620NE-CF
Turbo drag pump EVT-620NE incl. splinter screen	806.200	806.201
Control unit type FD-II 600K	806.210	806.210
Cable 2,5 m	806.011	806.011
Cable 5 m	806.012	806.012
Cable 10 m	806.013	806.013
Cable 20 m	806.014	806.014
Other lengths	Upon request	Upon request
Heating jacket 230V AC	806.020	806.020
Venting valve NC 230V AC, 50/60Hz	250.533	
Venting valve NC 24V AC, 50/60Hz	250.531	
Venting valve NC 24V, DC	250.530	
Filter for venting valves	215.152	
Venting valve NO 200-230V, 50/60Hz	250.851	
Venting valve NO 24V, DC	250.850	
Delayed venting unit	Upon request	
Aircooling unit R-XT, 90 - 264V AC, 50/60Hz	800.010	
12V, DC	800.011	
Fore pump	Upon request	

TYPE EVT-1200NE

For chemical applications



TYPE EVT-1200NE

For chemical applications

Technical Data		TYPE EVT-1200NE	
		1200NE-LF	1200NE-CF
Pump type		Compound/Drag	Compound/Drag
Inlet Flange		200 ISO-K	200 CF
Fore vacuum Flange		40 KF	40 KF
Pumping speed (air)	l/s	1200	1200
Pressure for max. speed	mbar	1×10^{-2}	1×10^{-2}
Rotation Speed	rpm	24.000	24.000
H ₂ Compression Ratio		6×10^3	6×10^3
N ₂ Compression Ratio		1×10^9	1×10^9
Ultimate Vacuum	mbar	6×10^{-8}	6×10^{-9}
Run up Time	min	<6	<6
Control Unit		FD-II 1200K	FD-II 1200K
Input Voltage	VAC	220 ±10%	220 ±10%
Purge port		16 KF	16 KF
Cooling water	l/min	> 2	> 2
Bearing type		Ceramic Oil	Ceramic Oil
Operating Orientation		Vertical (± 5°)	Vertical (± 5°)
Weight	kg	39	39

Ordering Information	TYPE EVT-1200NE	
	1200NE-LF	1200NE-CF
Turbo drag pump EVT-1200NE incl. splinter screen	812.200	812.201
Control unit type FD-II 1200K	812.210	812.210
Cable 2,5 m	812.011	812.011
Cable 5 m	812.012	812.012
Cable 10 m	812.013	812.013
Cable 20 m	812.014	812.014
Other lengths	Upon request	Upon request
Heating jacket 230V AC	812.020	812.020
Venting valve NC 230V AC, 50/60Hz	250.533	
Venting valve NC 24V AC, 50/60Hz	250.531	
Venting valve NC 24V, DC	250.530	
Filter for venting valves	215.152	
Venting valve NO 200-230V, 50/60Hz	250.851	
Venting valve NO 24V, DC	250.850	
Delayed venting unit	Upon request	
Aircooling unit R-XT, 90 - 264V AC, 50/60Hz	800.010	
12V, DC	800.011	
Fore pump	Upon request	

TURBO CONTROLLERS



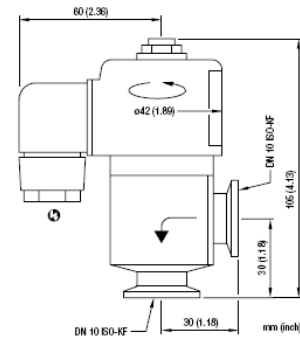
Technical Data		FD-II 600H	FD-II 600K	FD-II 700K
For pump		EVT-620E	EVT-620(N)ZE	EVT-700E
Drive Type	AC/DC	AC	AC	AC
Input Voltage	VAC	220/110 ±10%	220/110 ±10%	220/110 ±10%
Input Frequency	Hz	50/60 ±5%	50/60 ±5%	50/60 ±5%
Max. Output Power	W	750	750	750
Output Frequency	Hz	600 ±10	450 ±10	600 ±10
Weight	kg	18	18	18
LxWxH (220V)	mm	450x220x177	450x220x177	450x220x177

Technical Data		FD-II 1200H	FD-II 1200K	FD-II 1300K
For pump		EVT-1200CE	EVT-1200NE	EVT-1300E
Drive Type	AC/DC	AC	AC	AC
Input Voltage	VAC	220 ±10%	220/110 ±10%	220/110 ±10%
Input Frequency	Hz	50/60 ±5%	50/60 ±5%	50/60 ±5%
Max. Output Power	W	750	750	750
Output Frequency	Hz	450 ±10	400 ±10	400 ±10
Weight	kg	18	18	18
LxWxH	mm	450x220x177	450x220x177	450x220x177

Technical Data		FD-II 1600K	FD-II 1800K	FD-III
For pump		EVT-1600E	EVT-1800E	EVT-3500E
Drive Type	AC/DC	AC	AC	AC
Input Voltage	VAC	220 ±10%	220/110 ±10%	220/110 ±10%
Input Frequency	Hz	50/60 ±5%	50/60 ±5%	50/60 ±5%
Max. Output Power	W	750	750	1.100
Output Frequency	Hz	450 ±10	450 ±10	225 ±10
Weight	kg	18	18	27
LxWxH	mm	450x220x177	450x220x177	350x484x177

VENTING VALVE

Normally closed

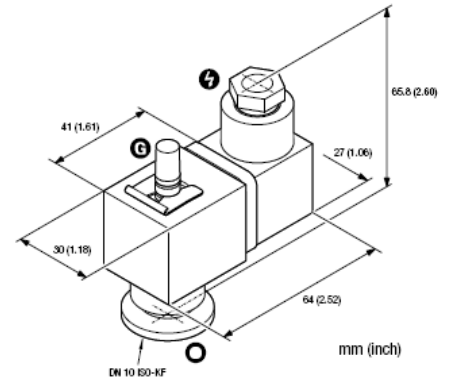


Technical Data		VVM010-A
Vacuum connections		DN10KF
Service life	Cycles	1.500.000
Tightness	mbar·l/s	1×10^{-9}
Conductance molecular flow	l/s	1
Conductance at 1 mbar	l/s	3,5
Pressure absolute	mbar	1×10^{-8}
Ambient temperature	°C	5 – 40
Pickup / Holding power	VA	35 / 15
Pressure resistance	bar	10
Closing / Opening time	ms	60 / 45
Switching frequency	1/min	50
Housing		Aluminum
Seals		FPM
Weight	kg	0,46

Ordering Information	VVM010-A
230 V AC, 50/60 Hz	250-533
115 V AC, 50/60 Hz	250-532
24 V AC, 50/60 Hz	250-531
24 V DC	250-530
Filter with port, centering- and clamp ring	215-152
Spare parts	
Sealing Set	215-208
Filter	B 4161 210 4F

POWER FAILURE VENTING VALVE

Normally open



Technical Data		WIM010-A	
		AC type	DC type
Vacuum connections		DN10KF	DN10KF
Venting time for 50 ltr vessel	sec	270	270
Tightness	mbar·l/s	1×10^{-7}	1×10^{-7}
Ambient temperature	°C	0 – 50	0 – 50
Switching frequency	1/min	60	60
Service life	Cycles	3.000.000	3.000.000
Opening time	ms	30	30
Closing time	ms	30	30
Nominal power Pickup	W / VA	- / 5	2,5 / -
Nominal power Holding	W / VA	- / 3,7	2,5 / -
Protection class		IP 65	IP 65
Housing		Aluminum	Aluminum
Seals		FPM	FPM
Weight	kg	0,1	0,1

Ordering Information	WIM010-A
200 - 250 V AC, 50/60 Hz	250-851
115 V AC, 50/60 Hz	250-852
24 V DC	250-850

AIRCOOLING UNIT



The R-XT air cooling unit is a high performance ultra quiet air to water cooling system. This systems allows to cool the EVT-series turbo molecular vacuum pumps without any connection to the buildings water system.

The R-XT has the following features:

- Automatic and manual control, Automatic via fan speed and flow speed.
- Warning and alarms of coolant flow and coolant level.
- Display of coolant temperature (°C or °F)
- Display of ambient temperature(°C or °F)
- Coolant level warning icon
- Coolant flow indicator

Technical Data		R-XT
Cooling control		Auto / Manual
Coolant flow	l/min	5
Maximum lift	m	1,8
Coolant Capacity max.	l	1,25
Nominal power	W	8
Water connections	mm	10
Dimensions LxWxH	mm	350x210x180
Ambient temperature	°C	10 – 40
Housing		Aluminum
Weight	kg	7,0

Ordering Information	R-XT
90 - 264 V AC, 50/60 Hz	800.010
12 V DC	800.011

